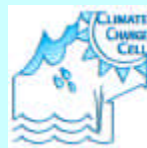


## Knowledge Network on Climate Change

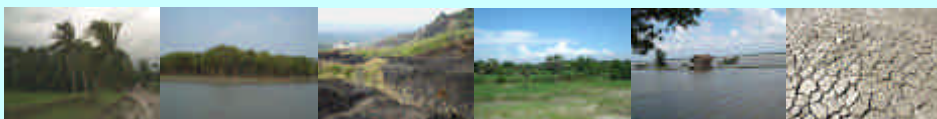
The Climate Change Cell is developing a climate change knowledge network aiming to collect, analyze and disseminate climate change related data. Through this network the Climate Change Cell collects and collates information on climate risks and adaptation options, and disseminates the results and support the translation and communication of information into a format useful to government line departments, local government and NGOs working with vulnerable communities.

## Contact Us

For further information, please contact



**Climate Change Cell**  
Component 4b, CDMP  
Room # 403 (3<sup>rd</sup> Floor), Paribesh Bhaban  
E-16, Agargaon, Sher-e-Bangla Nagar, Dhaka-1207  
Tel/Fax: 9111379 ext-147  
[info@climatechange-cell-bd.org](mailto:info@climatechange-cell-bd.org)  
[www.climatechange-cell-bd.org](http://www.climatechange-cell-bd.org)



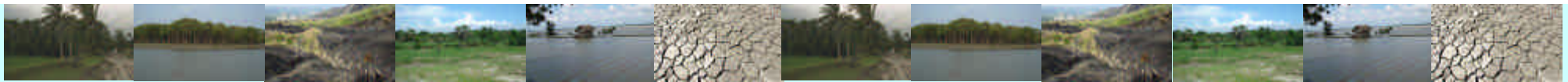
# Climate Change Cell

## Component 4b Comprehensive Disaster Management Programme



## Preparing for Climate Change





## Why is climate change so important for Bangladesh?

The global climate is changing and it is likely to change further over coming decades due to increasing concentrations of 'greenhouse gases' in the earth's atmosphere caused largely by human activities.



This is resulting in greater variations in weather patterns, a greater frequency of extreme weather events such as floods, droughts and tropical storms, and gradual rises in average temperatures and sea-levels.

Bangladesh is extremely vulnerable to climate change impacts because of its geographical location, historically disaster prone, high population density, high levels of poverty, and the reliance of many livelihoods on climate-sensitive sectors, particularly rural agriculture and fisheries.

The impacts of the climate change and variability are having two prong impacts, one is through increased and intensified extreme events with potential to damage infrastructures, life and livelihoods and on the other hand are impacting all spheres of natural productivity through slow onset of degradations because of erratic behavior of precipitation and

temperature regime, salinity, dryness etc.

These impacts will be falling more heavily on the disadvantaged like women, ethnic community, fishers and natural resources dependant community in Bangladesh.

Climate change therefore threatens both previous achievements and future efforts to reduce poverty in Bangladesh to date, particularly by reducing water and food security and damage to essential infrastructure during more frequent disaster events.

## What are the objectives of the Climate Change Cell?

The Climate Change Cell has been established in the Department of Environment in 2004 under the Comprehensive Disaster Management Program (CDMP), of the Government. It responds to the recognition that Bangladesh is particularly vulnerable to the effects of climate change.



The Cell provides the central focus for the Government's climate change related work, operating as a unit of the Department of Environment (DoE) under the Ministry of Environment and Forests (MoEF). Its objective is to enable the management of long term climate risks and uncertainties as an integral part of national development planning.

This will contribute to the primary objective of the wider Comprehensive Disaster Management Programme, which aims to strengthen the capacity of the Bangladesh disaster management system to reduce unacceptable risks and improve response and recovery activities in one hand and address slow onset induced impacts on the other.

Meeting these objectives will enable more effective and sustained poverty reduction through the reduction of disaster and climate risks within the overall development process.



## What does the Climate Change Cell do?

Ultimately, the Climate Change Cell supports Bangladesh toward Climate Resilient Development and integrating climate risks and extreme events in the country's Comprehensive Disaster Management Programme (CDMP).

- Facilitate capacity building of stakeholders
- Build partnership with Government agencies, NGOs, academics and private sectors
- Ensure effective participation of community
- Promote adaptation in development planning and processes

- Explore Risk Management and adaptation options through research
- Assess climate risks through modeling projections and community perception

The Climate Change Cell's work program focuses on four main areas:

**Build the capacity of Government** to coordinate and integrate climate change issues in mainstream development activities across government. It also acts as a secretariat to coordinate other national climate change activities such as National Communication preparation, the NAPA process, and the Clean Development Mechanism.

**Strengthen existing knowledge and availability of information** on impact prediction and adaptation to climate change. This includes compiling and synthesizing existing studies, and filling some of the gaps, as well as improving information exchange between science and policy-makers.

**Raise awareness, advocacy and coordination** with partners across government, NGOs, civil society, private sector and donor organizations. Using a variety of mechanisms and information products, the Cell is working to promote the integration of climate change adaptation and risk reduction in development activities, especially within climate sensitive sectors and the disaster risk reduction process.

